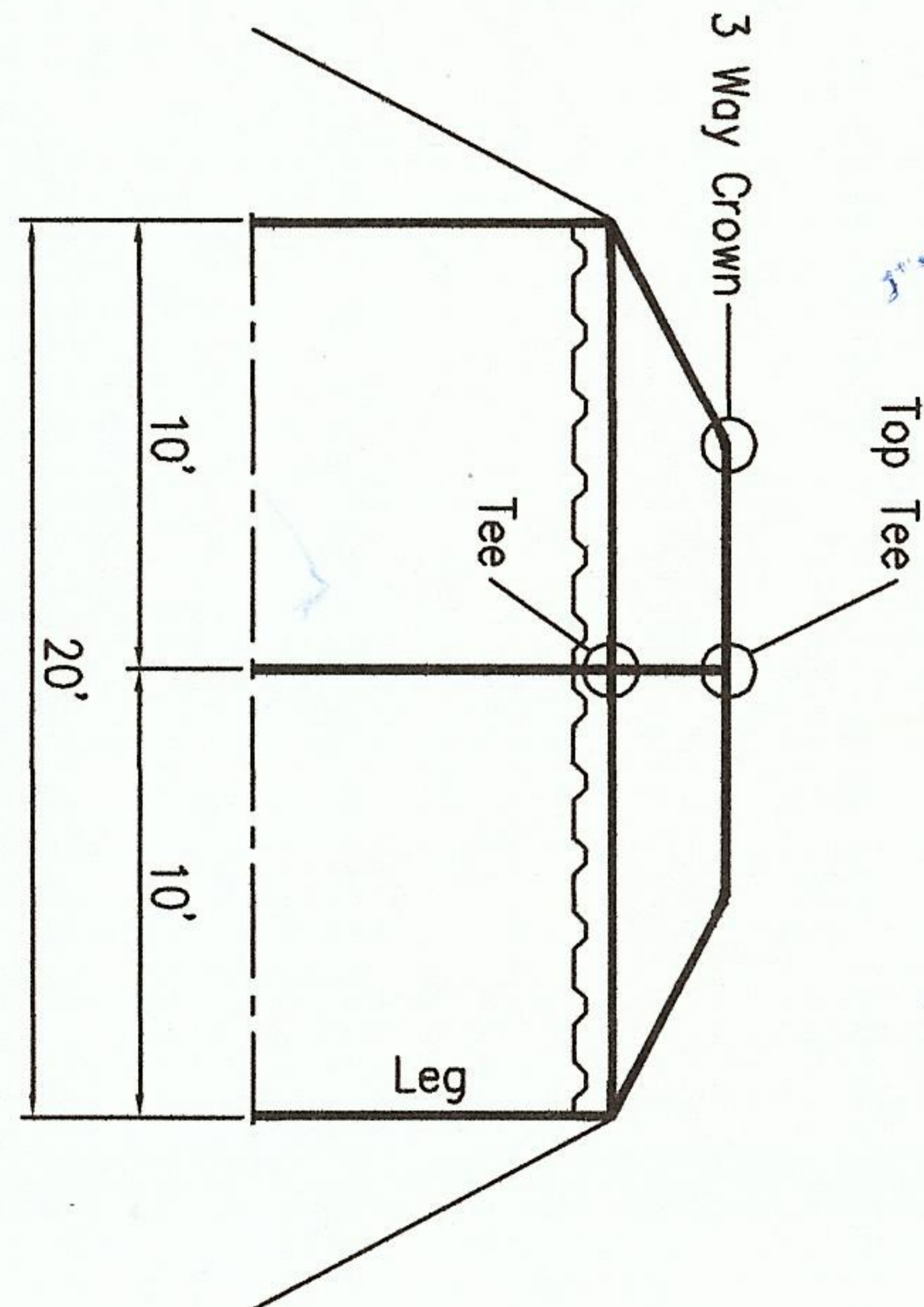


ISOMETRIC VIEW



SIDE VIEW

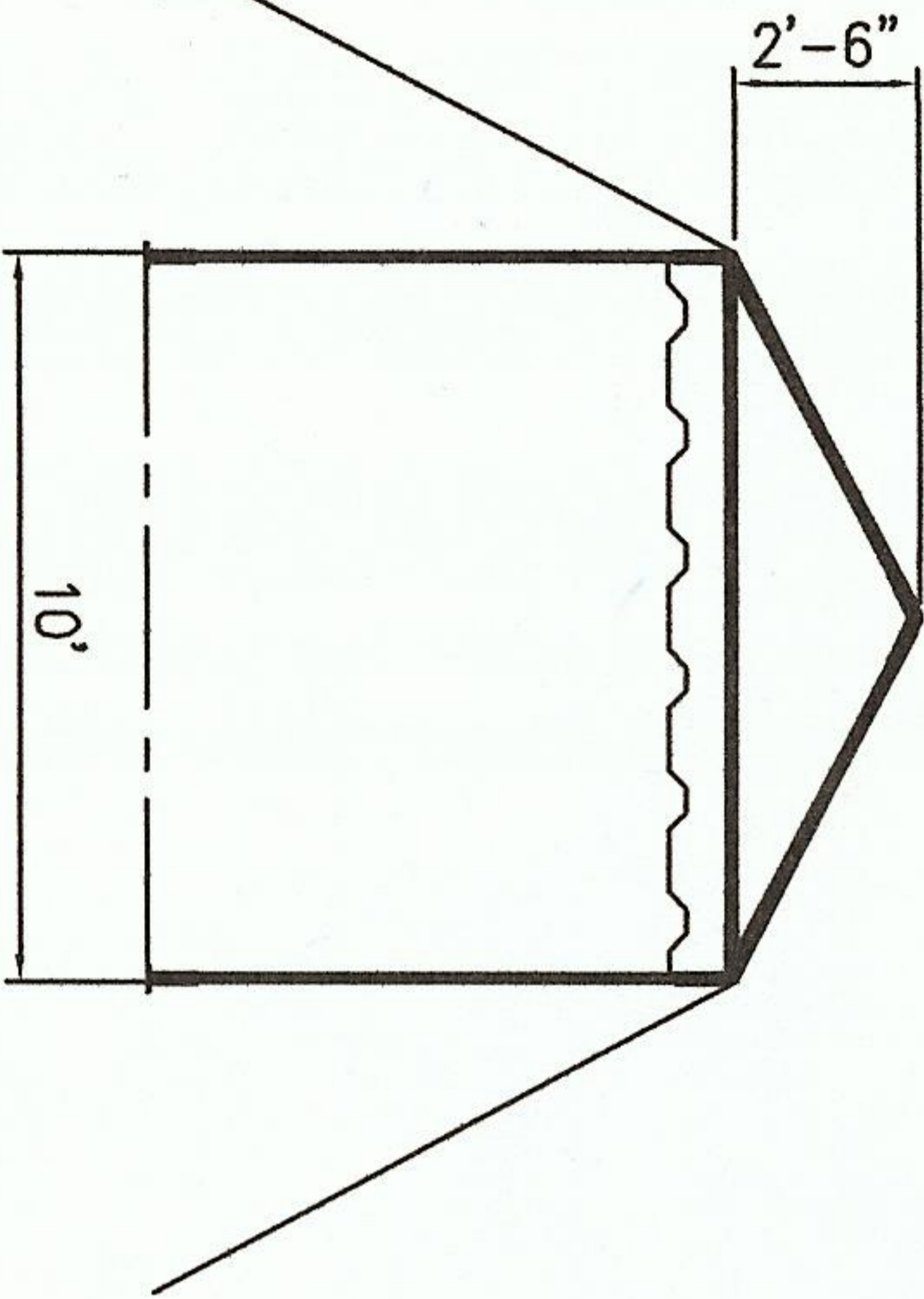
10' x 20' FRAME TENT

- PIPE: 2"
- (6) 6'-8" / 7'-8" / 9'-4" LEGS
  - (4) 6'-10" HIP RAFTER
  - (2) 4'-4" SPREADER
  - (2) 4'-11" RAFTER
  - (6) 9'-4" SPREADER

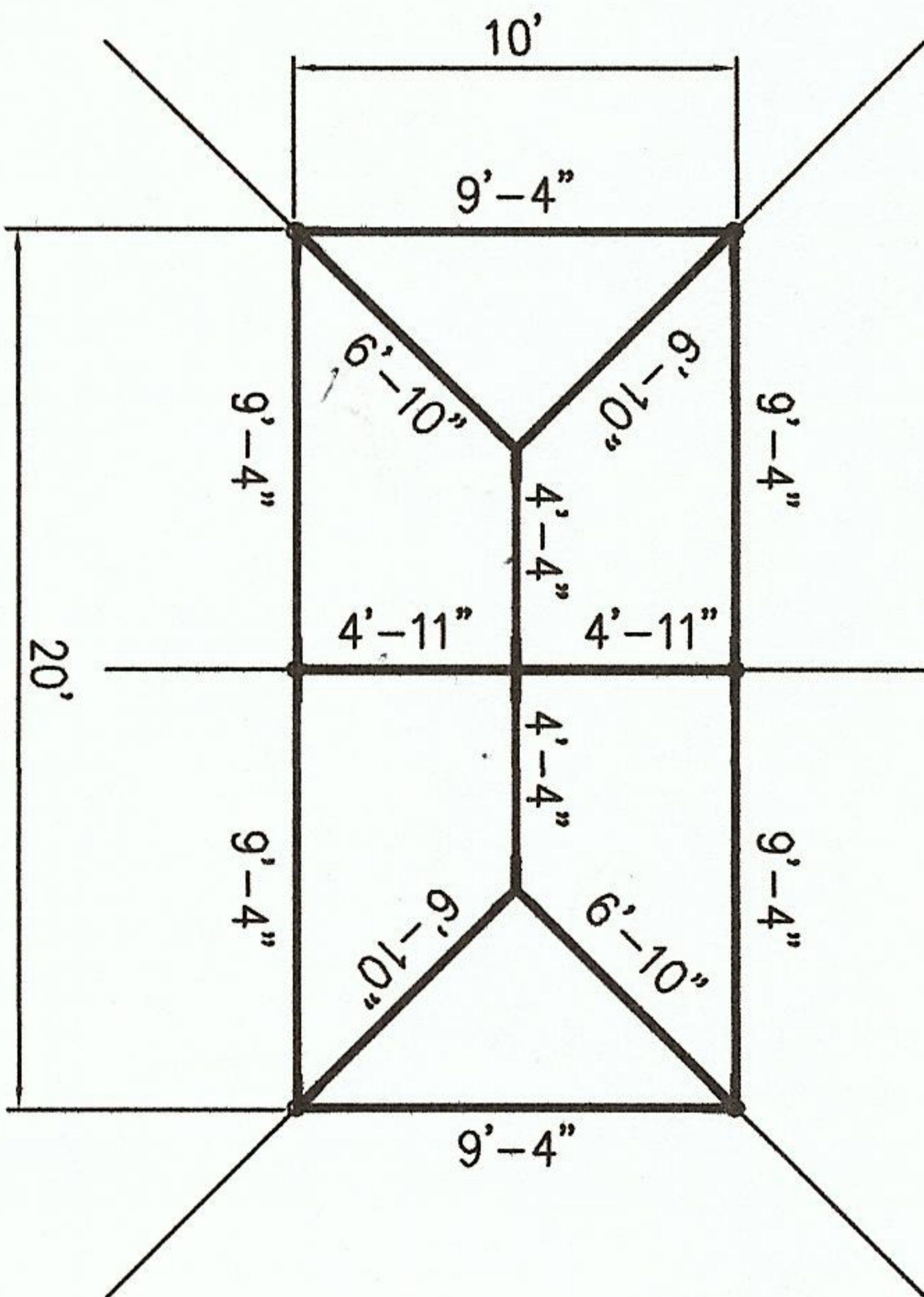
- FITTINGS:
- (4) CORNER
  - (2) 3 WAY CROWN
  - (1) TOP TEE
  - (2) TEE

- OPTIONS:
- (36) ASSEMBLY PINS
  - (6) STAKES
  - (6) ROPES
  - (6) BASEPLATES

- QWIK TOP OPTIONS:
- (6) RATCHET TENSIONERS
  - (6) QWIK BASEPLATES



END VIEW



PLAN VIEW

K:\cad files\Frame Tents\DIAGRAMS\10x10x20.dwg, 2/28/2007 10:07:28 AM, pdfFactory.pcs

ALL DATA AND INFORMATION CONTAINED IN OR DISCLOSED BY THIS DOCUMENT IS CONFIDENTIAL AND PROPRIETARY INFORMATION OF AZTEC TENTS AND ALL RIGHTS THEREIN ARE EXPRESSLY RESERVED. BY ACCEPTING THIS MATERIAL THE RECIPIENT AGREES THAT THIS MATERIAL AND INFORMATION CONTAINED THEREIN IS HELD IN CONFIDENCE AND IN TRUST AND WILL NOT BE COPIED, REPRODUCED WHOLE OR IN PART, NOR ITS CONTENTS REVEALED IN ANY MANNER TO OTHERS, EXCEPT TO MEET THE SPECIFIC PURPOSE FOR WHICH IT WAS DELIVERED.



490 ALASKA AVE. TORRANCE, CA. 90503  
(800) 228-3687 - FAX (310) 381-0722

ENGINEER CM DRAWN KT  
CHECKED - DATE 06/29/06

STANDARD

FRAME TENT / STANDARD  
10' W x 20' L

PART DESCRIPTION	CODE	SIZE	DRAWING NUMBER	REV
FRAME	AZ-1020-FRAME			1

FRAME TENTS\DIAGRAMS\10x10x20 110106 1235