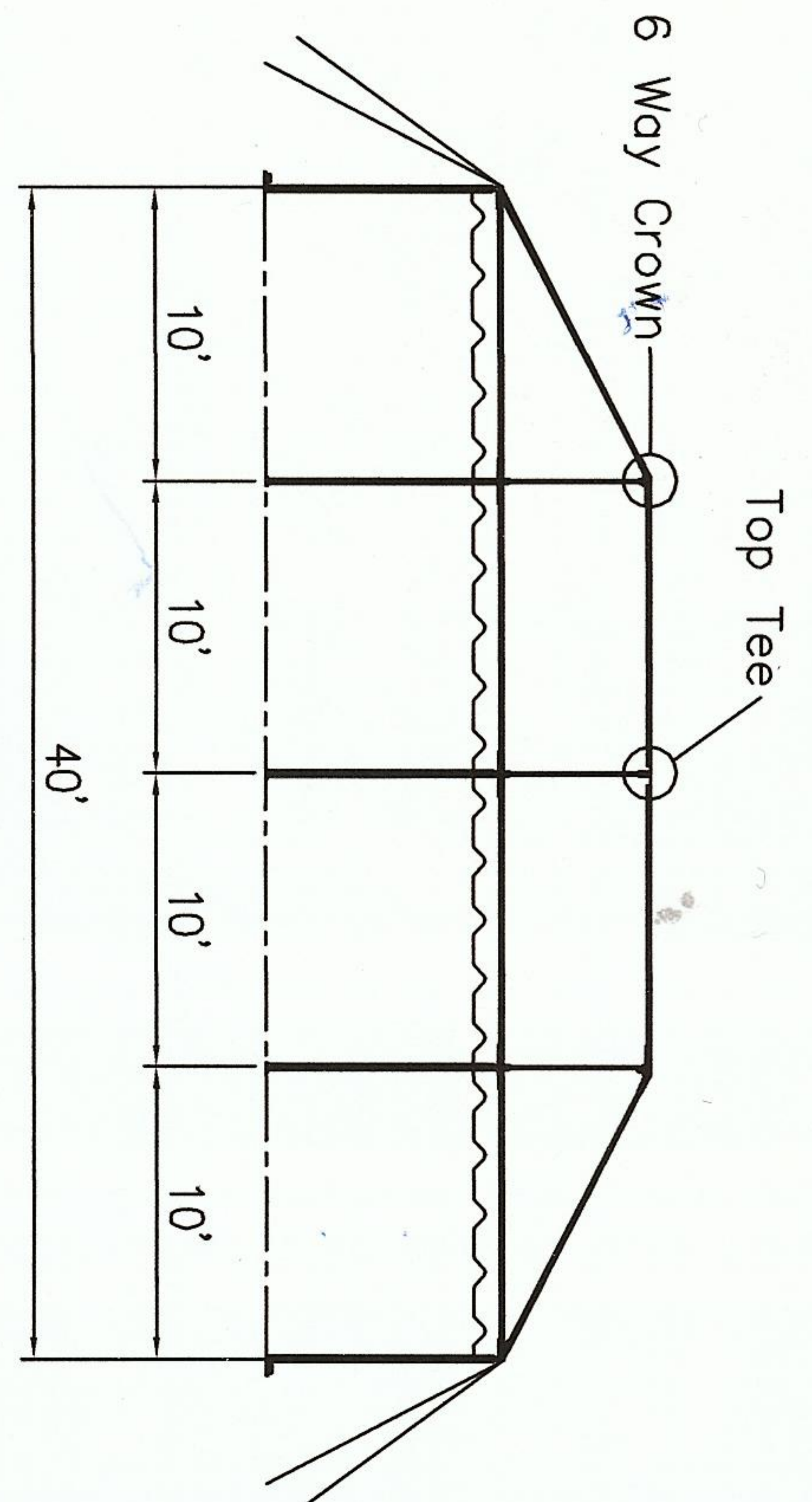


ISOMETRIC VIEW



SIDE VIEW

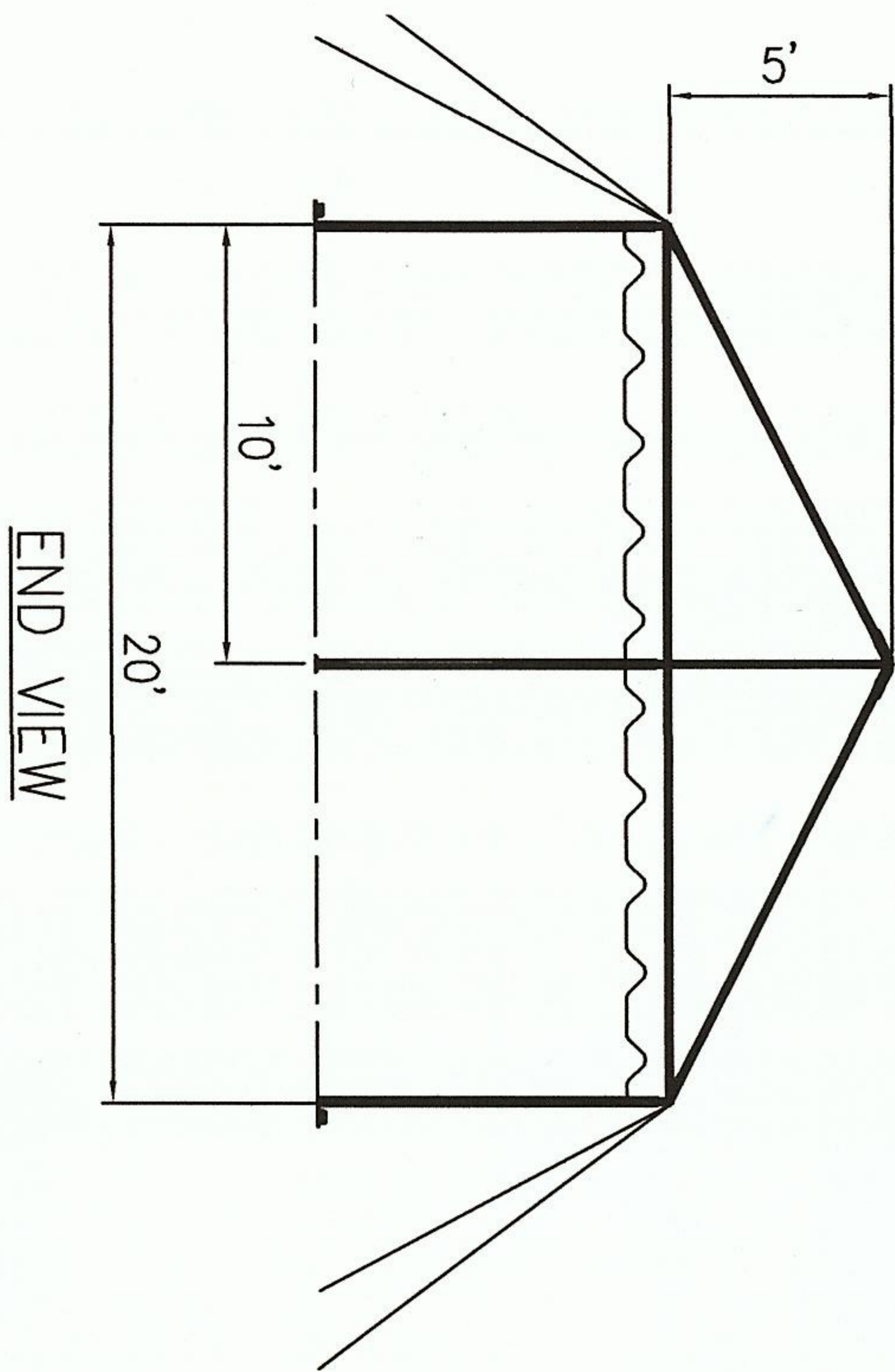
20' x 40' FRAME TENT

- PIPE: 2"
- (12) 6'-8" / 7'-8" / 9'-4" LEGS
  - (4) 14'-4" HIP RAFTER / SPREADER
  - (8) 10'-6" RAFTER
  - (14) 9'-4" SPREADER

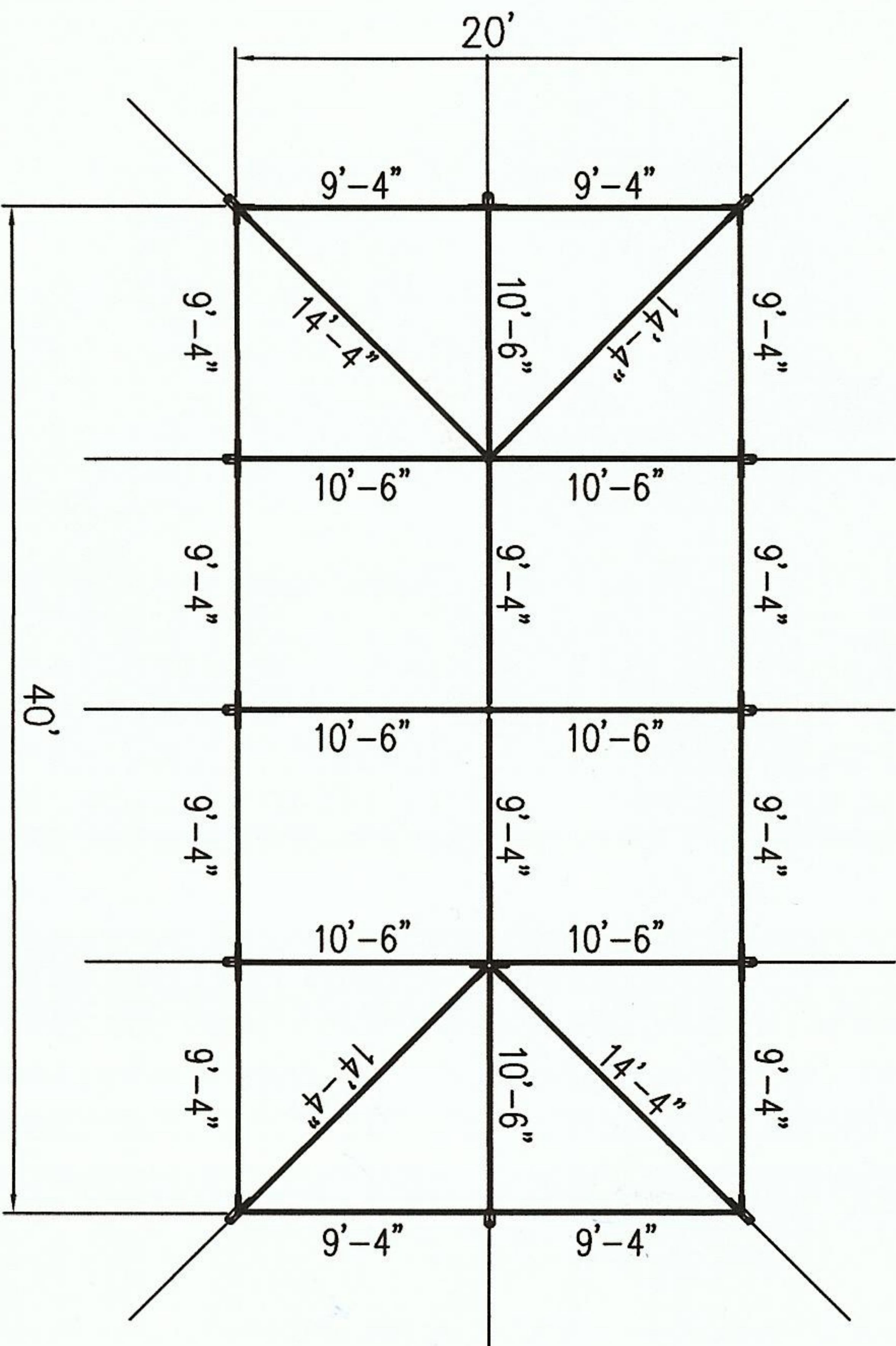
- FITTINGS:
- (4) CORNER
  - (2) 6 WAY CROWN
  - (1) TOP TEE
  - (8) TEES

- OPTIONS:
- (76) ASSEMBLY PINS
  - (12) STAKES
  - (12) ROPES
  - (12) BASEPLATES

- QWIK TOP OPTIONS:
- (12) RATCHET TENSIONERS
  - (12) QWIK BASEPLATES



END VIEW



PLAN VIEW

Frame Tents\DIAGRAMS\20x\20x40.dwg, 4/13/2010 2:53:51 PM, pdfFactory.pcs3

<p>ALL DATA AND INFORMATION CONTAINED IN OR DISCLOSED BY THIS DOCUMENT IS CONFIDENTIAL AND PROPRIETARY INFORMATION OF AZTEC TENTS AND ALL RIGHTS THEREIN ARE EXPRESSLY RESERVED. BY ACCEPTING THIS MATERIAL THE RECIPIENT AGREES THAT THIS MATERIAL AND INFORMATION CONTAINED THEREIN IS HELD IN CONFIDENCE AND IN TRUST AND WILL NOT BE COPIED, REPRODUCED WHOLE OR IN PART, NOR ITS CONTENTS REVEALED IN ANY MANNER TO OTHERS, EXCEPT TO MEET THE SPECIFIC PURPOSE FOR WHICH IT WAS DELIVERED.</p>		<p>2665 COLUMBIA ST. TORRANCE, CA. 90503 (800) 228-3687 - FAX (310) 381-0722</p>		<p>STANDARD</p>				
				<p>FRAME TENT / STANDARD 20'W x 40'L x 10' LEG SPACING</p>				
ENGINEER	CM	DRAWN	KT	PART DESCRIPTION	CODE	SIZE	DRAWING NUMBER	REV
				FRAME	AZ-2040-	FRAME	1	
<p>FRAME TENTS\DIAGRAMS\20x\20x40x15</p>		<p>041310 1440</p>		<p>CHECKED -</p>		<p>DATE 07/10/06</p>		